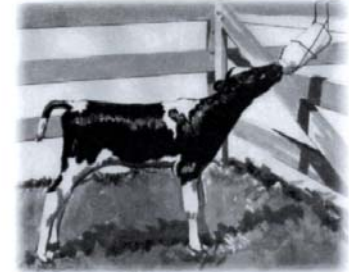


# FrontLine®

TECHNICAL INFORMATION FOR TODAY'S FEED PROFESSIONAL



## Milk Replacer Protein Trial

**Table 1. Milk Replacer Analysis Values<sup>(1)</sup>**

| Milk Replacer No.<br>Treatment | MR-1580<br>All Milk | MR-1581<br>Soy Flour | MR-1583<br>Soy Concn. |
|--------------------------------|---------------------|----------------------|-----------------------|
| Moisture, %                    | 6.75                | 5.86                 | 6.30                  |
| Dry Matter, %                  | 93.25               | 94.14                | 93.70                 |
| Protein, %                     | 22.07               | 22.26 <sup>(2)</sup> | 22.51 <sup>(2)</sup>  |

<sup>(1)</sup> Average of two samples

<sup>(2)</sup> Soy Protein supplied 48.9% of total protein.

**Table 2. Calf Performance<sup>(1)</sup>**

| Treatment                  | All Milk | Soy Flour | SPC    |
|----------------------------|----------|-----------|--------|
| Calf Performance:          |          |           |        |
| Avg. Initial Wt., lb.      | 106.00   | 104.10    | 106.20 |
| Avg. Final Wt., lb.        | 122.00   | 112.70    | 121.60 |
| Avg. Daily Gain, lb.       | .57      | .31       | .55    |
| Dry Matter Intake/Day, lb. | 1.37     | 1.42      | 1.40   |

<sup>(1)</sup> Fed for four weeks. No dry feed was fed.

**Table 3. Hemagglutination Testing<sup>a</sup>**

| Milk Replacer | B-Conglycinin<br>Final <sup>b</sup> | Glycinin<br>Final <sup>b</sup> |
|---------------|-------------------------------------|--------------------------------|
| All Milk      | 1.86 <sup>a</sup>                   | 1.07 <sup>a</sup>              |
| Soy Flour     | 6.85 <sup>b</sup>                   | 5.23 <sup>b</sup>              |
| SPC           | 1.69 <sup>a</sup>                   | 1.31 <sup>a</sup>              |

<sup>a</sup> The higher the value, the greater the antibody response.

<sup>b</sup> Values with different superscripts are significant: (p < .001).

Reprinted w/permission from The Calf Book,  
Schober Verlags-GMBH, Dr. med. Vet. Ludwig Schrag.  
Ing. Agr. Heinz Singer

Reprinted w/permission from The Calf Book,  
Schober Verlags-GMBH, Dr. med. Vet. Ludwig Schrag.  
Ing. Agr. Heinz Singer

FL/T001.12